



# EVERY8D Enterprise SMS Service

## HTTP API Specifications-2.1

## Revision History

Version	Date	Section	Changes to Documentation
2.0.0	2016/08/08	All	Final document
2.0.1	2017/08/18		Send SMS Parm add RETRYTIME
2.0.2	2017/11/1		MMS
2.0.3	2018/01/29		<ol style="list-style-type: none"><li>1. Add urlEncode and UTF-8 encoding in sendSMS</li><li>2. Add urlEncode and UTF-8 encoding in sendMMS</li><li>3. Modify charge of MMS to 3 point/1 message</li></ol>
2.0.4	2018/04/23		Modify charge calculation of MMS
2.0.5	2018/06/02		Update DR description
2.0.6	2018/06/22		Update Send Status reply description

# Index

1. Sending an SMS .....	5
1.1 Long SMS .....	5
1.2 MMS .....	8
2. Sending status query .....	11
2.1 Sending status reply .....	11
2.2 Sending status query .....	14
3. Other.....	19
3.1 Credit query.....	19
3.2 Delete Reservation SMS .....	20
3.3 Delete Reservation MMS.....	21

# 0 、 Introduction

This document describes the functions of the SMS HTTP API service for Enterprise. The API service allows you to send messages, query message records, and maintain an account.

HTTP format: HTTP Post / HTTP Get, using URL encode.

If you are interested in our interfacing API for SMS, please go to our official website and leave your contact info for our professional consults, who will contact you and help you access this service. Thank you.

Support HTTP (<http://api.every8d.com/>) and HTTPS (<https://oms.every8d.com/>) protocol.

Technical contact: [support@every8d.com.tw](mailto:support@every8d.com.tw)

# 1. Sending an SMS

## 1.1 Long SMS

- Description

Our text message product supports long SMS messages, which can contain up to 333 characters. Messages with more than 333 characters can still be sent, but the system will separate it automatically.

Our SMS product also provides international messaging, but this setting is off by default. You can configure this setting on the web site (Send center International SMS configuration).

SMS platform messages are charged as below FYR: Charging reference for texting to any Taiwanese mobile phone number	
1~70(characters)	-1 point /message
71~134(characters)	-2 points /message
135~201(characters)	-3 points /message
202~268(characters)	-4 points /message
269~333(characters)	-5 points /message

※ Charges for internal SMS (number not starting with +886) are tripled.

- HTTP Link

[http://\[Server\\_URL\]/API21/HTTP/sendSMS.ashx](http://[Server_URL]/API21/HTTP/sendSMS.ashx)

- Sample

<https://oms.every8d.com/API21/HTTP/sendSMS.ashx?UID=xxxx&PWD=xxxx&SB=&MSG=&...>

## ■ Parameters

Parameter	Description
UID	Login ID
PWD	Password
SB	(SUBJECT)Message title. Empty titles are accepted. The title will not be sent with the SMS; it is just a note. Using urlEncode + UTF-8 encoding
MSG	message content Using urlEncode + UTF-8 encoding
DEST	Receiver's mobile number. Format : +886912345678 or 0912345678 Separator : (,) ex:0912345678,0922333444 Using urlEncode encoding
ST	Reservation time. - Send immediately: No input (empty). - Reservation send:Please input the reservation time, using this format: yyyyMMddHHmns, example:Reservation time is 2009/01/31 15:30:00, ST=20090131153000. If the ST is less than the time at which the system received the order, it will not be submitted. If inputted time is already past, it will be delivered immediately.
RETRYTIME	SMS validity period of unit: minutes. if not specified, then the platform default validity peroid is 1440 minutes.

## ■ Return Value

Response String, format :

CREDIT,SENDED,COST,UNSEND,BATCH_ID
------------------------------------

Sample :

1230.00,4,4.0,220478cc-8506-49b2-93b7-2505f651c12e

Return Detail :

XML TAG	
TAG	Description
CREDIT	Balance credit.

	Negative (*note 1) means there was a delivery failure and the system can't process this command.
SENT	Sent messages
COST	This shows spent points.
UNSENT	Unsent messages with no credit charged.
BATCH_ID	Batch ID. Ex:220478cc-8506-49b2-93b7-2505f651c12e

**\*Note 1:**

Error code	Description
-99	Server site error. Please contact manufacturer.

## 1.2 MMS

### ■ Description

Our text message product supports MMS messages, which can contain up to 4,000 characters. Subjects limit 15 words with English and Chinese, or Subjects limit 95 words with English and number. Image and text limit 300KB.

MMS messages not provides International.

Only for HTTPS(<https://oms.every8d.com/>).

SMS platform messages are charged as below FYR: <b>Charging reference for texting to any Taiwanese mobile phone number</b>	
Under 50KB	-3 point /message
50~300KB	-5 point /message

### ■ HTTP Link

[http://\[Server\\_URL\]/API21/HTTP/MMS/sendMMS.ashx](http://[Server_URL]/API21/HTTP/MMS/sendMMS.ashx)

### ■ Sample

<https://oms.every8d.com/API21/HTTP/MMS/sendMMS.ashx?UID=xxxx&PWD=xxxx&SB=&MSG=&...>

### ■ Parameters

Parameter	Description
UID	Login ID
PWD	Password
SB	(SUBJECT)Message title. Subjects limit 15 words with English and Chinese, or Subjects limit 95 words with English and number. Using urlEncode + UTF-8 encoding
MSG	message content Using urlEncode + UTF-8 encoding



DEST	Receiver's mobile number. Format : +886912345678 or 0912345678 Separator : (,) ex:0912345678,0922333444 Using urlEncode encoding
ST	Reservation time. - Send immediately: No input (empty). - Reservation send:Please input the reservation time, using this format: yyyyMMddHHmns, example:Reservation time is 2009/01/31 15:30:00, ST=20090131153000. If the ST is less than the time at which the system received the order, it will not be submitted. If inputted time is already past, it will be delivered immediately.
RETRYTIME	SMS validity period of unit: minutes. if not specified, then the platform default validity peroid is 1440 minutes.
ATTACHMENT	Image file · binary base64 encoded
TYPE	Support jpg/jpeg/png/gif <b>*must use lower case string</b>

■ Return Value

Response String, format :

CREDIT,SENDED,COST,UNSEND,BATCH\_ID

Sample :

1230.00,4,4.0,220478cc-8506-49b2-93b7-2505f651c12e

Return Detail :

XML TAG	
TAG	Description
CREDIT	Balance credit. Negative (*note 1) means there was a delivery failure and the system can't process this command.
SENT	Sent messages
COST	This shows spent points.
UNSENT	Unsent messages with no credit charged.
BATCH_ID	Batch ID. Ex:220478cc-8506-49b2-93b7-2505f651c12e

**\*Note 1:**

Error code	Description
-99	Server site error. Please contact manufacturer.

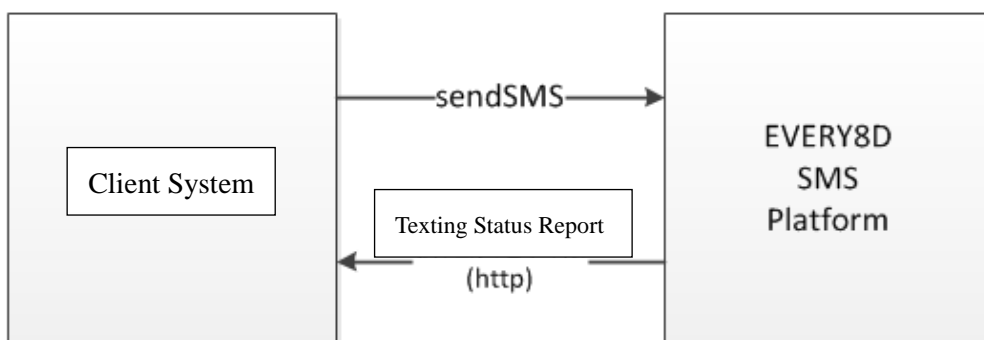
## 2. Sending status query

We provide two ways to query:

1. If the client's system provides a URL for an EVERY8D system call, our system can relay the results to the client (2.1).
2. You can query the sending status on the EVERY8D web site (2.2).

### 2.1 Sending status reply

The operating mechanism figure is as shown below. After the sending message, the system will take the initiative in sending the status to the client. The client needs to provide a URL to receive the information.



If your URL interface address is <http://yourwebsite.com.tw/report.aspx>,

EVERY8D will use the HTTP GET function return as below:

<http://yourwebsite.com.tw/report.aspx?BatchID=xxxx&RM=xxxx&RT=xxx&STATUS=xx&SM=xxxx&MR=xxxx&USERID=xxxx>

## Receive program Sample with ASP.NET:

```
protected void Page_Load(object sender, EventArgs e)
{
    string BatchID =Request["BatchID"].ToString(); //batch ID
    string ReceiverMobile = Request["RM"].ToString(); //phone number
    string ReplyTime = Request["RT"].ToString();
        // reply time, ex: 20090210120000
    string Content = Request["SM"].ToString(); //reply content
    string MessageRecordNo = Request["MR"].ToString(); // Record No
    string UserAccount= Request["USERID"].ToString(); // User Account
    // you process
}
```

■ Parameters

Parameters details		
Parameters	Description	other
BATCHID	Batch ID	Batch ID
RM	Receive mobile phone number	Ex:+886961295288
RT	Return time	Ex: 20090210120000
STATUS	Sending status	Please refer to 2.2 STATUS
SM	Replay message content	Encode and send
MR	Record No. for every message.	To distinguish between repeated phone numbers in the same batch.
USERID	User account	

■ Result

If the connection fails, this function will retry up to 10 times.

■ Reply SMS

This function also transmits the reply message to the client.

STATUS=999, and SM = reply message content.

## 2.2 Sending status query

### ■ Description

This function allows you to query a sending status by using BatchID, and one query can return up to 1000 items of data.

### ■ HTTP Link

`http://[Server_URL]/API21/HTTP/getDeliveryStatus.ashx`

### ■ Sample

`https://oms.every8d.com/API21/HTTP/getDeliveryStatus.ashx?UID=xxx&PWD=xxxx&PNO=xxxx`

### ■ Parameters

Parameter	Description
UID	Login ID
PWD	Password
BID	Batch ID
PNO	Paging. Empty is acceptable. If you query over 1000 items, PageNo input "2" will be for items 2001 to 3000, then PageNo input 3, and so on.

■ Return Value

(1) Text format, use TAB(\t) for separation, one item per line:

SMS_COUNT				
NAME	MOBILE	SEND_TIME	COST	STATUS
NAME	MOBILE	SEND_TIME	COST	STATUS
NAME	MOBILE	SEND_TIME	COST	STATUS
...				

(2)Sample

1130				
Roger	+886933123123	2010/03/03 14:25:55	1.0	100
Peggy	+886933123122	2010/03/03 14:26:55	1.0	100
Larry	+886933123121	2010/03/03 14:27:55	1.0	103
...				

(3)Status code:

STATUS	<p>0: Sent</p> <p>100: Mobile received</p> <p>101: Delivery failure due to mobile terminal factors</p> <p>102: Delivery failure due to telecommunications terminal factors</p> <p>103: This mobile phone number does not exist.</p> <p>104: Delivery failure due to telecommunications terminal factors</p> <p>105: Delivery failure due to telecommunications terminal factors 106: Delivery fail due to telecommunications terminal factors 107: Received after deadline</p> <p>300: Reservation SMS</p> <p>303: Canceled</p> <p>500: International message delivery failed because the configuration is in closed position.</p> <p>-1:parmater error</p> <p>-2:account or password error</p>
--------	---

	<ul style="list-style-type: none"><li>-3: Invalid mobile number</li><li>-4: DT format error or send time has exceeded more than 24 hours</li><li>-5:Short Message length on limit error</li><li>-6:DT formate error</li></ul>
--	---



## 2.3 Sending MMS status query

### ■ Description

This function allows you to query a sending status by using BatchID, and one query can return up to 1000 items of data.

Only for HTTPS(<https://oms.every8d.com/>).

### ■ HTTP Link

[http://\[Server\\_URL\]/API21/HTTP/MMS/getDeliveryStatus.ashx](http://[Server_URL]/API21/HTTP/MMS/getDeliveryStatus.ashx)

### ■ Sample

<https://oms.every8d.com/API21/HTTP/MMS/getDeliveryStatus.ashx?UID=xxx>

[&PWD=xxxx&BID=xxxx&PNO=xxxx](https://oms.every8d.com/API21/HTTP/MMS/getDeliveryStatus.ashx?UID=xxx&PWD=xxxx&BID=xxxx&PNO=xxxx)

### ■ Parameters

Parameter	Description
UID	Login ID
PWD	Password
BID	Batch ID
PNO	Paging. Empty is acceptable. If you query over 1000 items, PageNo input "2" will be for items 2001 to 3000, then PageNo input 3, and so on.

■ Return Value

(1) Text format, use TAB(\t) for separation, one item per line:

SMS_COUNT				
NAME	MOBILE	SEND_TIME	COST	STATUS
NAME	MOBILE	SEND_TIME	COST	STATUS
NAME	MOBILE	SEND_TIME	COST	STATUS
...				

(2)Sample

1130				
Roger	+886933123123	2010/03/03 14:25:55	1.0	100
Peggy	+886933123122	2010/03/03 14:26:55	1.0	100
Larry	+886933123121	2010/03/03 14:27:55	1.0	103
...				

(3)Status code:

STATUS	700: Sent
	300: Reservation MMS
	303: Canceled

## 3. Other

### 3.1 Credit query

#### ■ Description

Provide credit query function.

#### ■ HTTP Link

`http://[Server_URL]/API21/HTTP/getCredit.ashx`

#### ■ Sample

`https://oms.every8d.com/API21/HTTP/getCredit.ashx?UID=xxxx&PWD=xxxx`

#### ■ Parameters

Parameter	Description
UID	Login ID
PWD	Password

#### ■ Return Value

Sample :

2310.00

## 3.2 Delete Reservation SMS

### ■ Description

Deletes reservation messages.

### ■ HTTP Link

`http://[Server_URL]/API21/HTTP/eraseBooking.ashx`

### ■ Sample

`https://oms.every8d.com/API21/HTTP/eraseBooking.ashx?UID=xxxx&PWD=xxxx&BID=XXX`

### ■ Parameters

Parameter	Description
UID	Login ID
PWD	Password
BID	Batch ID

### ■ Return Value

Return value	Description
a,b	a:delete counts, b:return credit
null	No results

### 3.3 Delete Reservation MMS

#### ■ Description

Deletes reservation MMS messages.

Only for HTTPS(<https://oms.every8d.com/>).

#### ■ HTTP Link

[http://\[Server\\_URL\]/API21/HTTP/MMS/eraseBooking.ashx](http://[Server_URL]/API21/HTTP/MMS/eraseBooking.ashx)

#### ■ Sample

[https://oms.every8d.com/API21/HTTP/MMS/eraseBooking.ashx?UID=xxxx&](https://oms.every8d.com/API21/HTTP/MMS/eraseBooking.ashx?UID=xxxx&PWD=xxxx&BID=XXX)

[PWD=xxxx&BID=XXX](https://oms.every8d.com/API21/HTTP/MMS/eraseBooking.ashx?UID=xxxx&PWD=xxxx&BID=XXX)

#### ■ Parameters

Parameter	Description
UID	Login ID
PWD	Password
BID	Batch ID

#### ■ Return Value

Return value	Description
a,b	a:delete counts, b:return credit
null	No results